

JEWEL CNC

Machine Specification:

Working Area - 280 X 240 X 135mm.

Spindle Motor - 0.8 kW (Air cooled).

Motor - Easy Stepper

Motor Capacity - 4.5nm Holding Torque.

Drive System - Ball Screw.

Guide Motion - Linear Motion Rod.

Max Tool Size - 6mm.

Working Light - Yes.

Spindle Speed - 0 to 24000 RPM.

Machine Accuracy - 0.02mm.

Repeatability - 0.01 mm.

Controller - Standalone Controller.

Power - 220V Single Phase 50/60Hz.

Machine Weight - 95 KG Approx.

Machine Dimensions - W - 750, L - 550, H - 600mm.

Closed Body for Precious Metals Recovery.

High Speed Machining.

Software & File Support - Artcam, G-code, Tap etc.

Rotary Axis (Optional) - For Bangles and Rings.

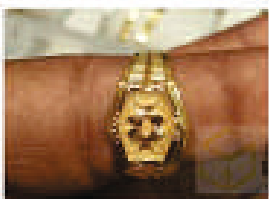
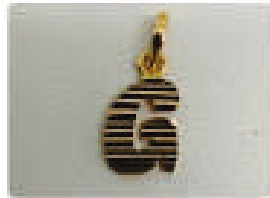
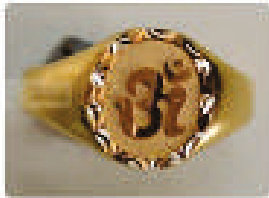
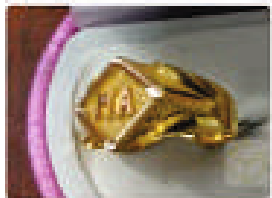
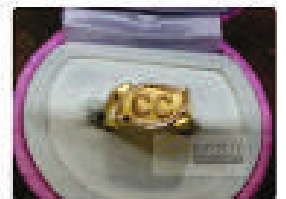
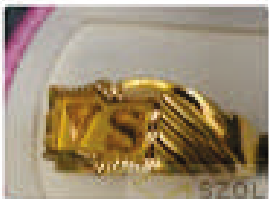
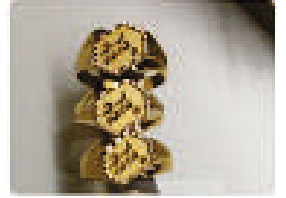
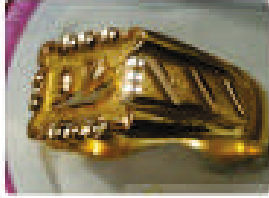


Anushka 

James
Sofia

Matthew

LOVE





OPTIONAL ACCESSORIES:

Collet for bangles holding - 1



2Pcs any size you want
(For more per piece price 250 - 550 extra)

Collet for rings holding - 1



2Pcs any size you want
(For more per piece price 250 - 550 extra)

Carbide cutters Vbit for engraving, cutting and drilling



Dust collecting tray - 1pcs



Dust removal brush - 1pcs

